

RATINGS & CAPACITIES



Input : 1,000 MBH
 Gross Output : 819 MBH
 Net AHRI Rating : 712 MBH

24.5 B.H.P. (240.0 kW)
 Fuel : Natural Gas or Propane
 Inlet Gas Pressure (NG) : 5 PSI Max.
 Inlet Gas Pressure (LP) : 2 PSI Max.
 (NG/LP) : 7" W.C. Min.
 Operating Weight : 1,322 Lbs. (600 kg)

ELECTRICAL SUPPLY OPTIONS

120v/1ph/60hz:	7.5 Amps
208v/1ph/60hz:	6.6 Amps
230v/1ph/60hz:	6.4 Amps
208v/3ph/60hz:	6.0 Amps
230v/3ph/60hz:	6.0 Amps
460v/3ph/60hz:	3.0 Amps

ASME DESIGN DATA

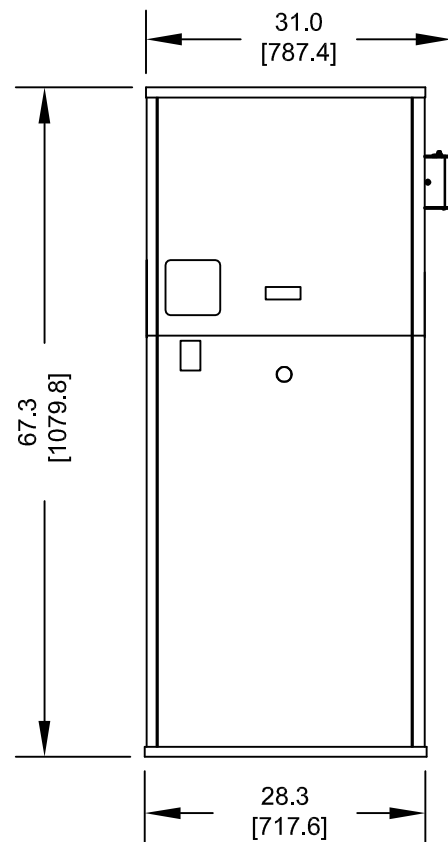
Max. 160 PSIG & 250°F

TRIM & CONTROLS

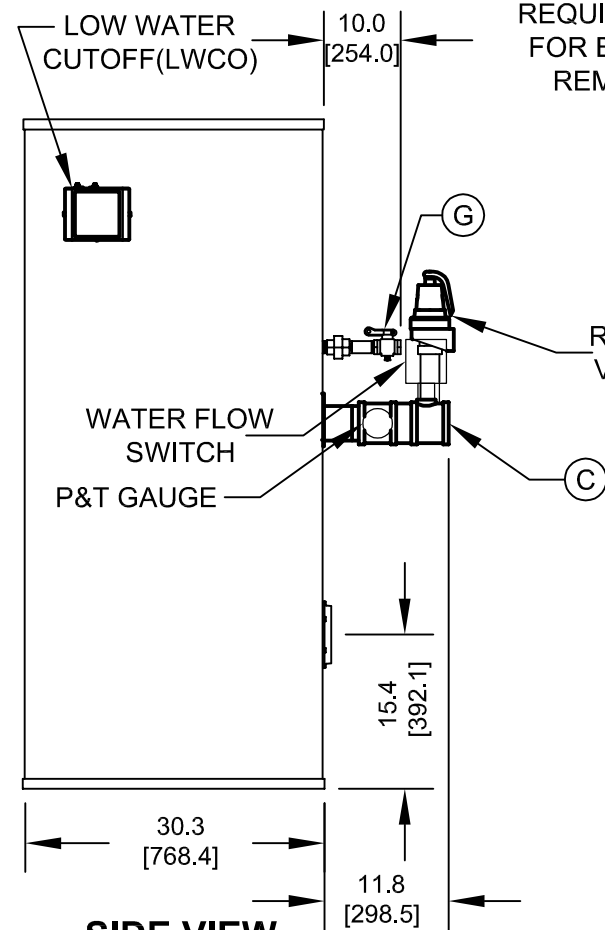
High Temperature Limit	TSBC (EVS ONLY)
Flame Safeguard	RWF55 (EVA ONLY)
High/Low Gas Press Switches	Pilot Gas Valve
Modulating Gas Valve	Pilot Gas Regulator
Operating Control	Pilot/Leak Test Cocks
Blower Motor, 1-1/2 HP	Combustion Air Switch
Water Flow Switch	Press. & Temp. Gauge
LWCO	Relief Valve
	VFD

NOTES:

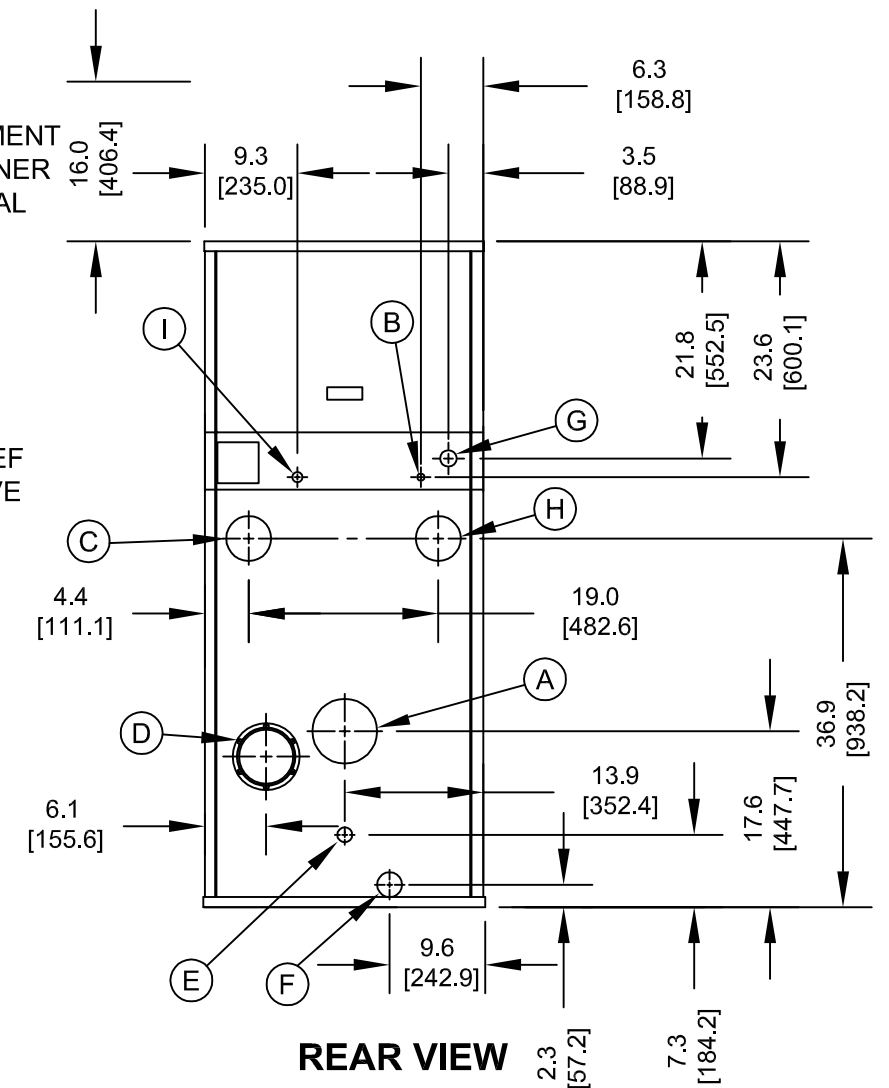
1. SEE O&M FOR REQUIRED INSTALLATION CLEARANCES.
2. DIMENSIONS SHOWN ARE FOR REFERENCE ONLY.
3. DIMENSIONS ENCLOSED IN [] ARE IN MM.



FRONT VIEW



SIDE VIEW



REAR VIEW

CONNECTION	DESCRIPTION
(A)	FLUE OUTLET, 6" [152.4] DIAMETER (AL29-4C SS)
(B)	GAS PILOT, 1/4" [6.4] O.D. TUBE
(C)	WATER SUPPLY TO SYSTEM, 3" NPT
(D)	INLET AIR, 6" [152.4] DIAMETER
(E)	DRAIN, CONDENSATE, 5/8" [15.9] O.D. TUBE
(F)	DRAIN, BOILER, 1" NPT
(G)	GAS SUPPLY, 1 1/2" NPT
(H)	WATER RETURN FROM SYSTEM, 3" NPT
(I)	GAS VENT, 3/4" NPT (D.B.&B. & D.B.&B. w/POC ONLY)

DOUBLE BLOCK & BLEED (D.B.&B.) GAS TRAIN OPTION

The following components are included in addition to above items when this option is used.
 (1) Motorized Gas Valve, (1) Solenoid Gas Valve
 N.O. Vent Valve

D.B.&B. W/ P.O.C. GAS TRAIN OPTION

The following components are included in addition to above items when this option is used.
 (2) Motorized Gas Valves With Proof Of Closure switches
 Flame Safeguard that recognizes proof of closure valves.
 N.O. Vent Valve

EVA/EVS-1000 BOILER



P.O. Box 3244, Lancaster, PA 17604-3244

Innovative Equipment For Hot Water Systems
 www.thermalsolutions.com